

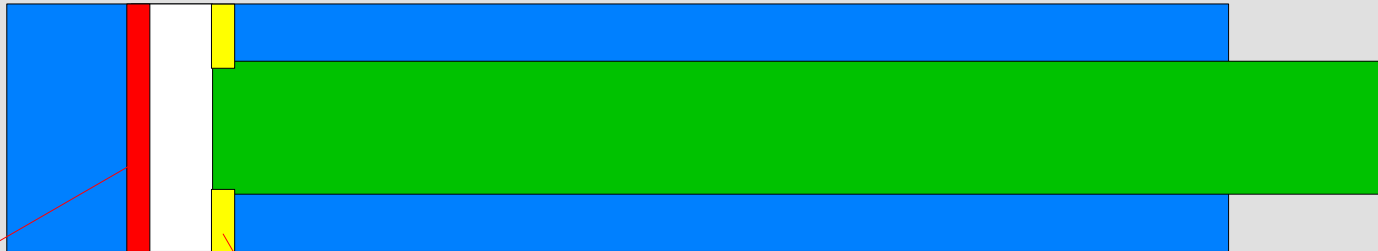
**MONTAGE DIFFERENTIEL**

The image features the text "MONTAGE DIFFERENTIEL" in a bold, gold, 3D sans-serif font. The letters are thick and have a slight shadow on their bottom surfaces, giving them a three-dimensional appearance. The text is arranged in a single line that recedes into the distance, following a perspective that converges towards a vanishing point on the left side of the frame. The background is a light greenish-grey color, overlaid with a grid of thin, white lines that also recede into the distance, creating a strong sense of depth and perspective. The overall composition is clean and modern, with a focus on geometric forms and perspective.

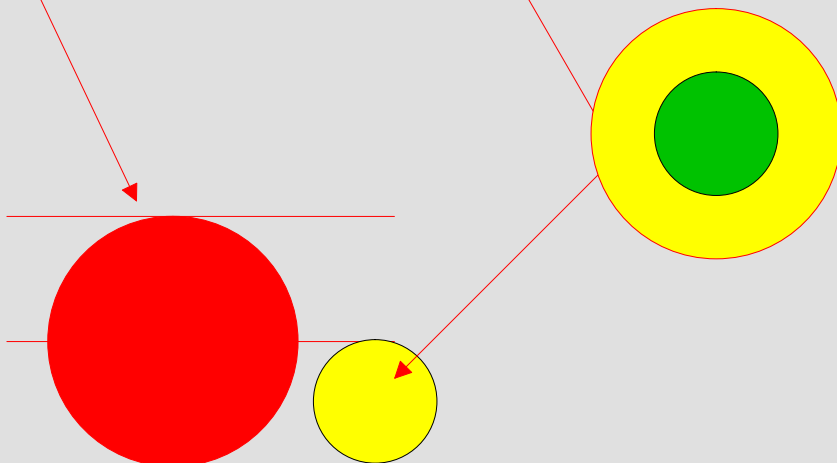
# Avance table

1A

90/40x300

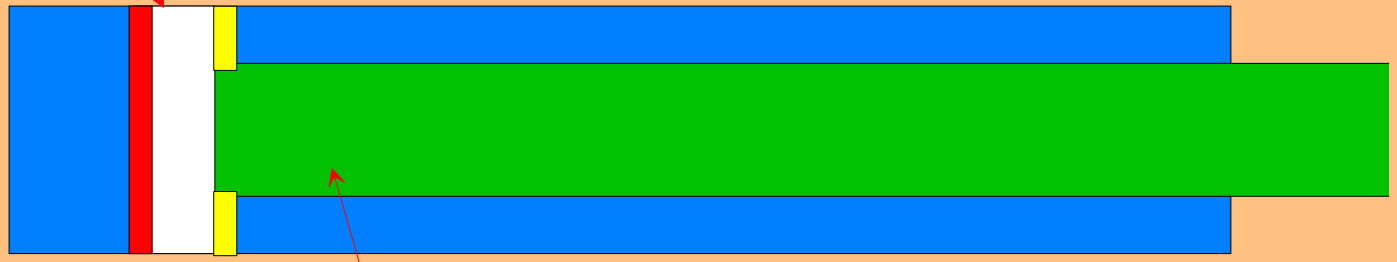


Un vérin différentiel est un vérin dont la surface annulaire (coté tige) est 2 fois plus petite

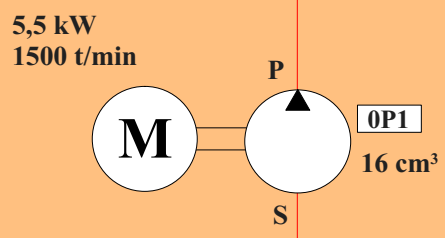


Une forte pression des 2 cotés sur les joints augmente les frottements et l'usure

Les 2 cotés sont alimentés en même temps la différence de section en général 2/1 permet la sortie du vérin l'huile chassée de l'avant remplit la chambre coté piston



Un grosse tige indique qu'on est en présence d'un vérin différentiel

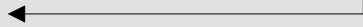
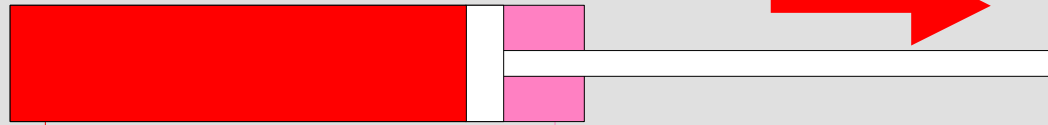


Un montage différentiel permet une avance rapide il évite le "stick slip" = gilssement saccadé

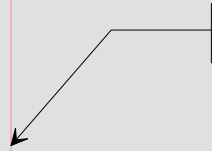
# Avance table

1A

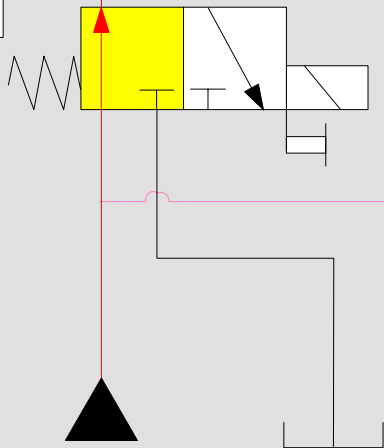
90/40x300



Contre pression



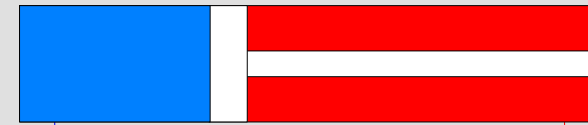
1V1



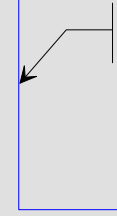
# Avance table

1A

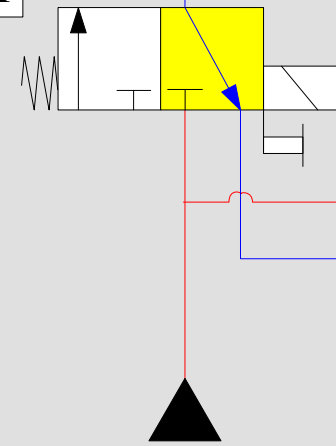
90/40x300



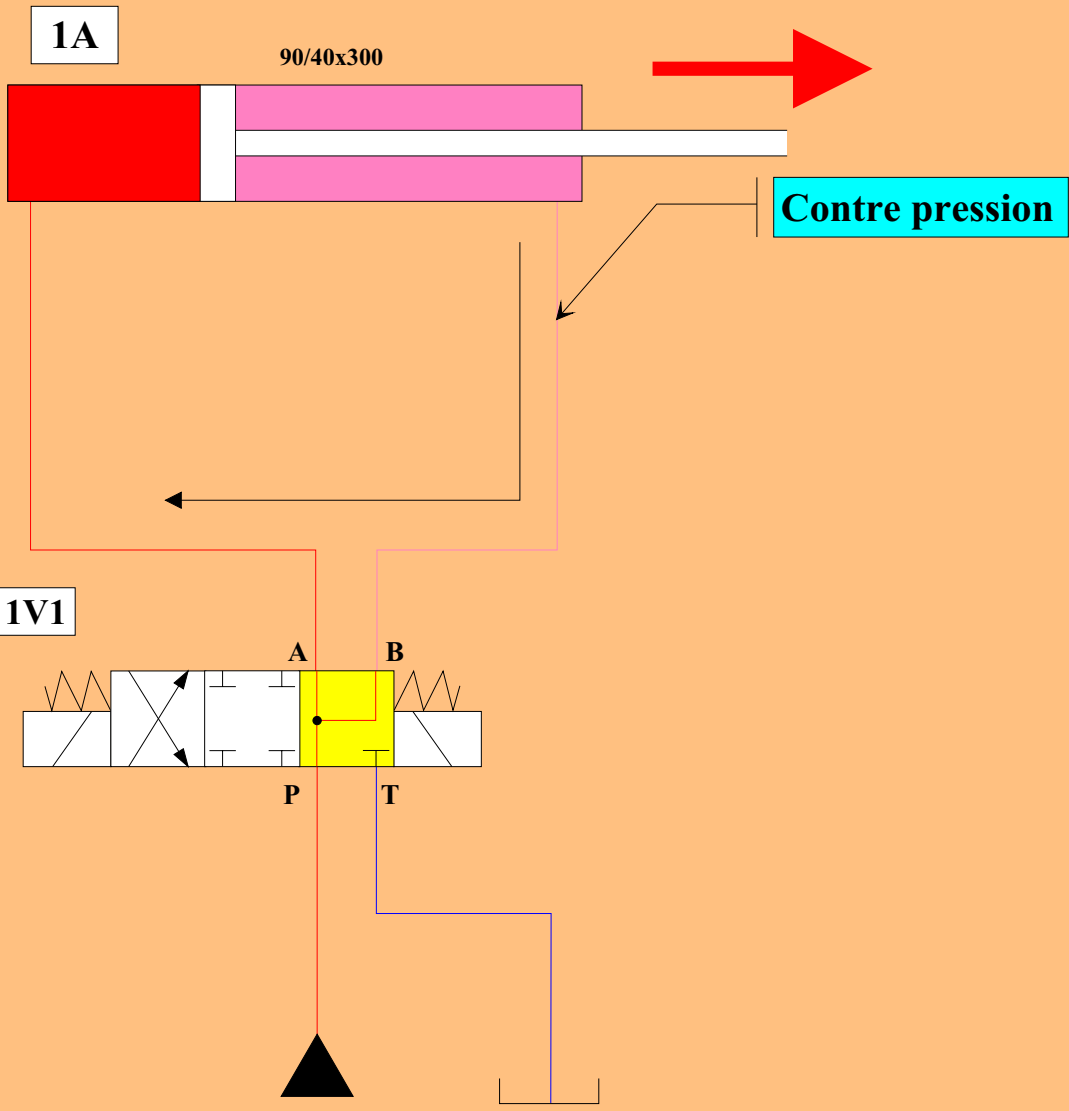
Pression = 0



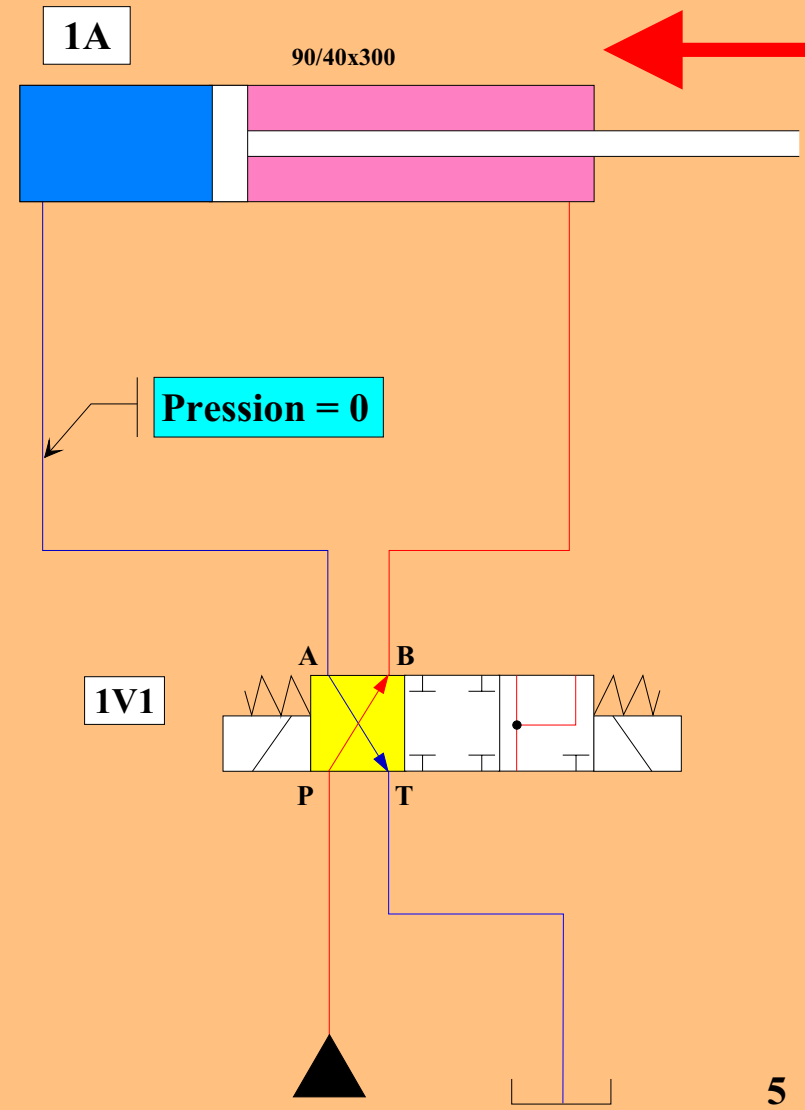
1V1



# Avance table



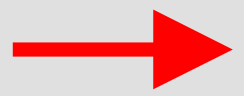
# Avance table



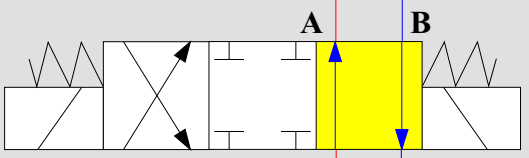
# Avance table

1A

90/40x300



Sortie différentielle



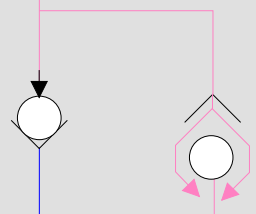
1V1

P

A

B

T



# Avance table

1A

90/40x300



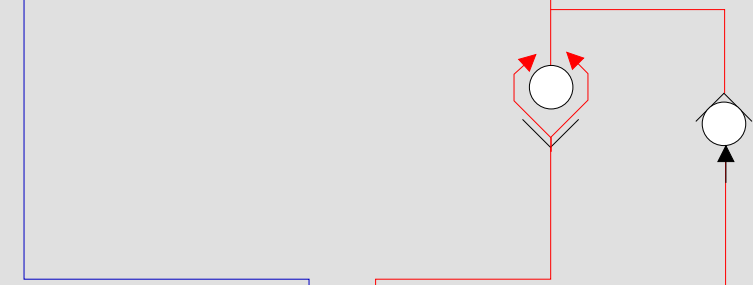
1V1

A

B

P

T



# Avance table

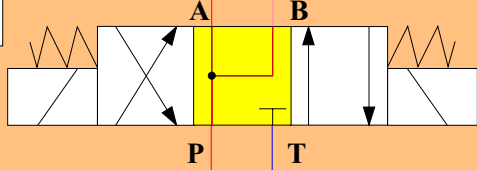
1A

90/40x300



Sortie différentielle

1V1



P

T



# Avance table

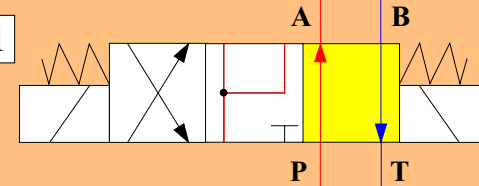
1A

90/40x300



Sortie normale

1V1

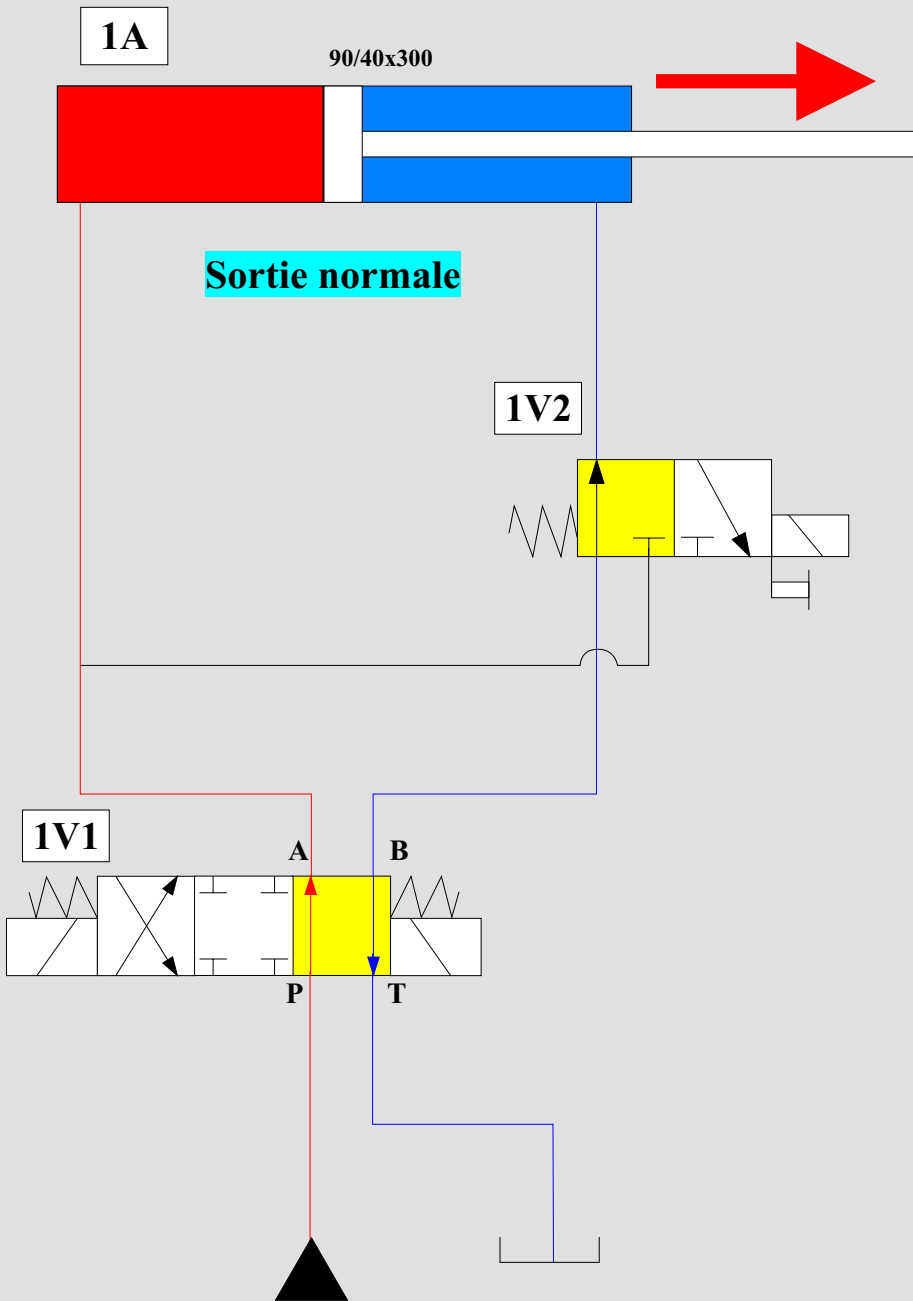


P

T



# Avance table



# Avance table

